



ehb Cable Assembly

ehb offers cable assembly solutions in a safe, fast and reliable way according to higher standards. In different embodiments for numerous applications. Standard and customer-specific cable assemblies in small, medium and large series.

APPLICATION

All areas of electronics and electrical engineering

Mobile and stationary applications

Utility and special vehicles

Customer-specific solutions

As accessory for ehb products

In accordance with customer specifications for new developments original equipment and serial production

Flexible, competent and quality-tested cable assembly

100% electrical test as well as 100% visual inspection of the finished systems. Latest testing methods, testing with iCAT cable test system

Many years of experience in the area of cable assemblies for motor and special machines

Efficient and cost-effective manufacturing solutions – enabling our customers to compete on the competitive market.

Compact solutions with electronics

Integration of various components, e.g. diodes, resistors, fuses, relays or housings as well as PCB connections. Flow direction, resistance, inductance are tested or monitored by our testing devices.

Saving time and money by eliminating complex cabling

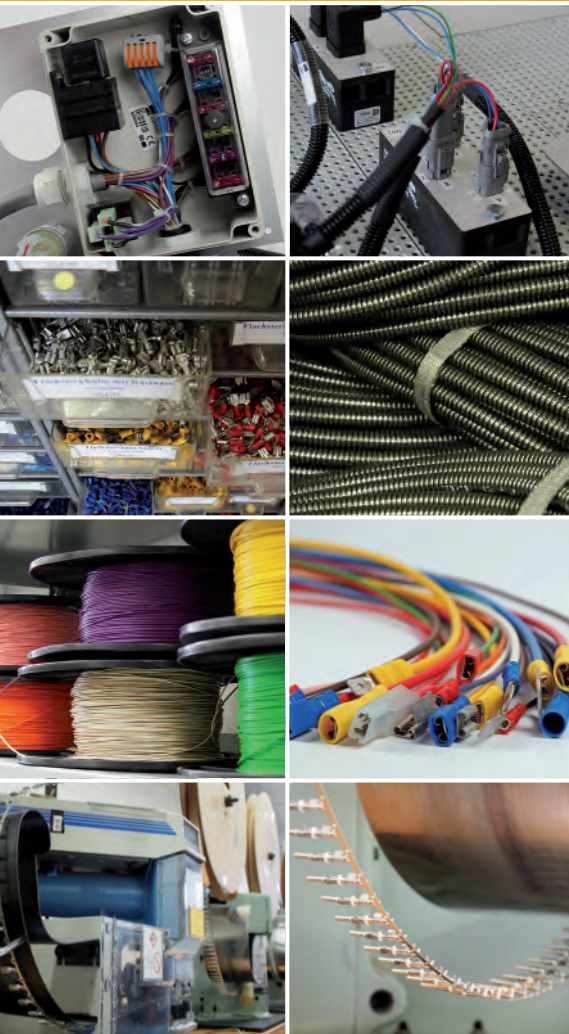
ehb offers the possibility of redesign. Existing cabling is checked and perfected.

Cable assembly according to customer requirements, custom production

ehb plans and develops with you – from measuring on site to commissioning.

Your one-stop source

Joint planning, supplier selection, procurement and stockpiling of the components. Sample prototype construction, serial production.



ehb cable assembly

analysing – conceptualising – assembling

- Cable harnesses made of single strands
- Cable harnesses made of hose lines
- Component assembly
- Component integration
- Assembly of single and multi-core cables
- Individual solutions
- Complex cable assembly
- Custom production
- ehb redesign of cable harnesses
- Quality assurance
- Functional testing
- Sample construction
- Small, medium and large series

